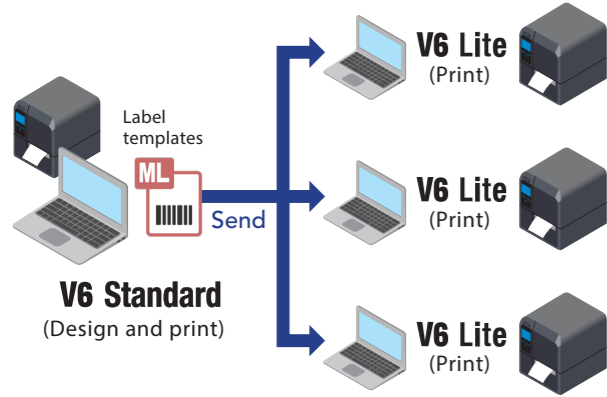


Multi LABELIST V6 Lite

Lightweight software for printing only.



Multi LABELIST Component

Tool that can be used to build custom Windows desktop applications for direct printing.

Details

- 1 Works with common programming languages such as Visual Basic because it is a .NET component.
- 2 Helps users easily design label templates in Multi LABELIST and print them directly without using printer commands.
- 3 Supports various interfaces.
- 4 Enables monitoring of printer status and checking for issues such as paper end. (SATO printers only)

*Multi LABELIST Component is license-free to use.

Product comparison

Functions	V6 Standard	V6 Lite	Component
Design label templates for SATO printers	✓	×	×
Print labels via SATO printers	✓	✓	✓
Customize data entry window	✓	×	×
Convert templates created by older Multi LABELIST versions	✓	×	×
Import data for printing	✓	✓	×
Import data from watch folders to trigger printing	✓	✓	×
Specify conditions for assigning templates and print assigned templates	✓	✓*1	×

*1 The Lite version only prints assigned templates. It cannot be used to specify conditions for assigning templates.

System requirements

	Operating system	CPU	RAM	Hard disk space	Display resolution	Display language
V6 Standard	64-bit OS	Minimum 2 GHz	Minimum 2 GB	Minimum 5 GB	Recommended: 1280 x 1024 (SXGA) or higher	• Japanese • English • Simplified Chinese
V6 Lite	• Windows 11 / 10 • Windows Server 2022 / 2019 / 2016	Recommended: Quad-core processor or higher	Recommended: 4 GB or more	Minimum 500 MB if .NET framework 4.8 has been installed		
Component	Operating system	Development environment	Connectivity			
	32-bit OS • Windows 10 64-bit OS • Windows 11 / 10 • Windows Server 2022 / 2019 / 2016	Recommended: Visual Studio 2022 / 2019 • Programming language: Visual Basic/C# • Development platform: .NET Framework 4.8	Serial, parallel, USB, Ethernet, wireless LAN, Bluetooth® *2 (for direct data transfer *3 and accessing printer driver)			

*2 For use with Microsoft Bluetooth® Stack only. Please check your Bluetooth® stack type with your device maker.

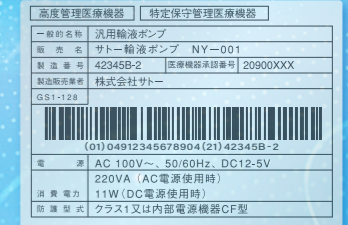
*3 For SATO printers only. Not supported when connected via parallel port.

For supported printers, barcode symbologies and more information, scan here.

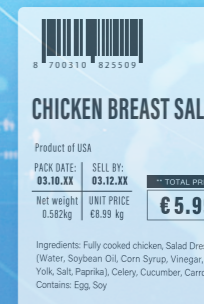
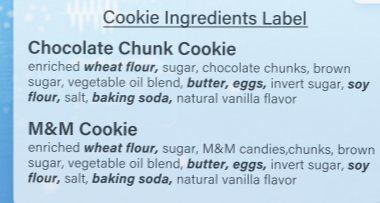
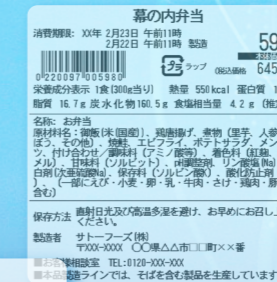


Contact your local SATO office to start using Multi LABELIST with a 30-day free trial.

SATO
Powered On Site /



Label design and printing software Multi LABELIST V6



Products in this series

To design and print labels:
Multi LABELIST V6 Standard

To print labels:
Multi LABELIST V6 Lite

To build Windows apps:
Multi LABELIST Component

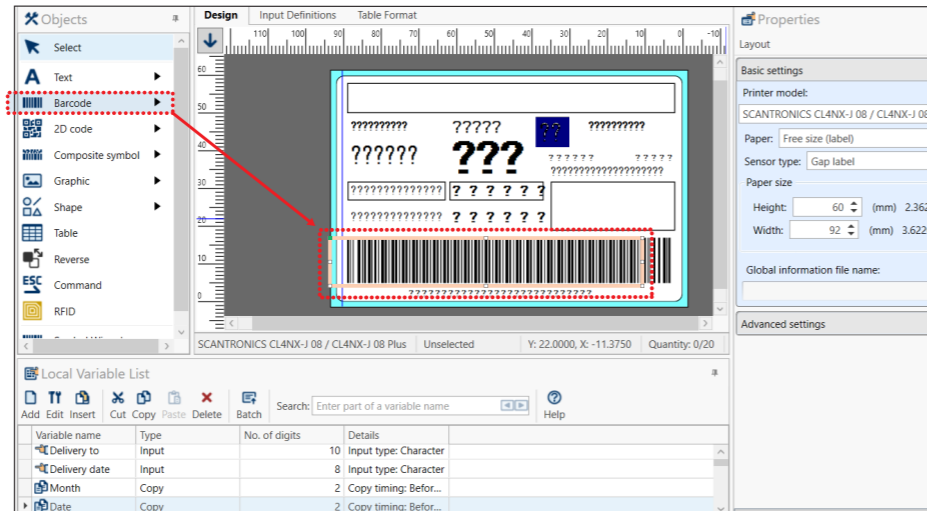
All information in this leaflet is accurate as of February 2023.
Product specifications are subject to change without notice.
Any unauthorized reproduction of the contents of this leaflet, in part or whole, is strictly prohibited.
Windows is a registered trademark of Microsoft Corporation.
Bluetooth® is a trademark of Bluetooth SIG, Inc.
All other software, product or company names are trademarks or registered trademarks of their respective owners.

The software for all your labeling needs

1. Design labels with ease

Template design window

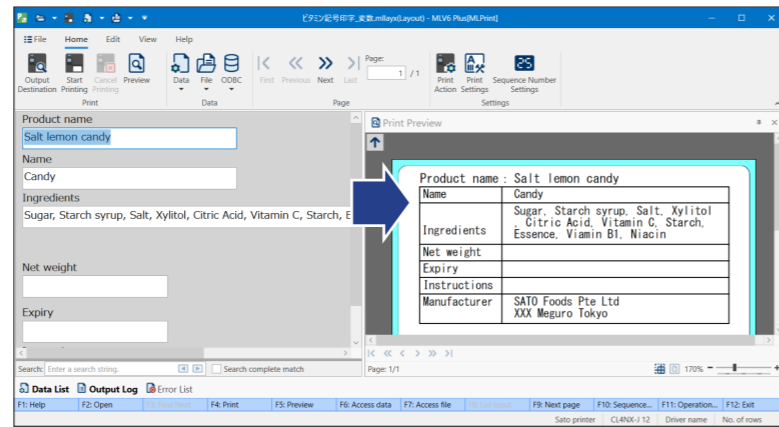
Drag and drop objects such as text and barcode to create or modify template.



2. See a real-time preview

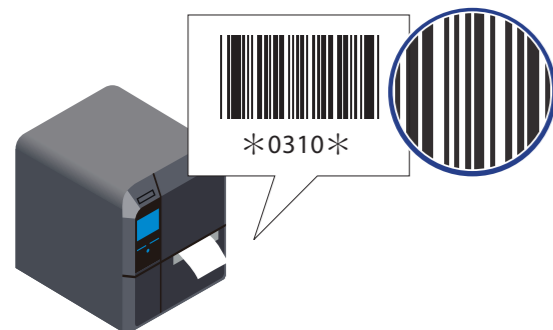
Data entry window

Verify what the printed output will look like as you type to prevent errors.



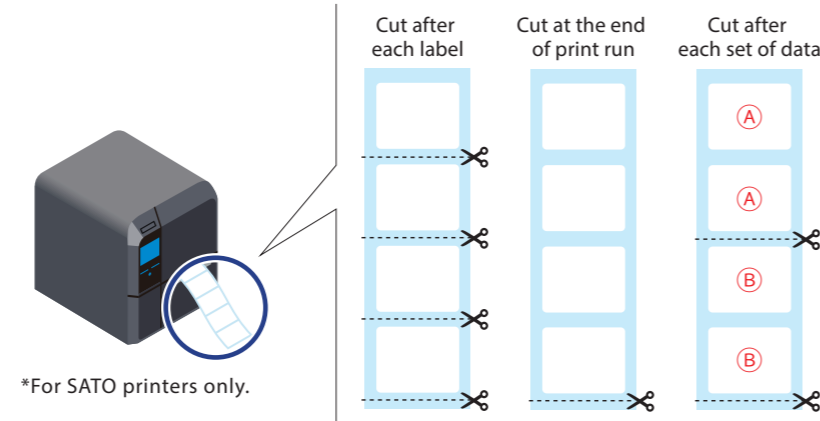
3. Print quality barcodes

Get the best barcode quality, relative to your printer resolution.



4. Control cut methods for printed labels

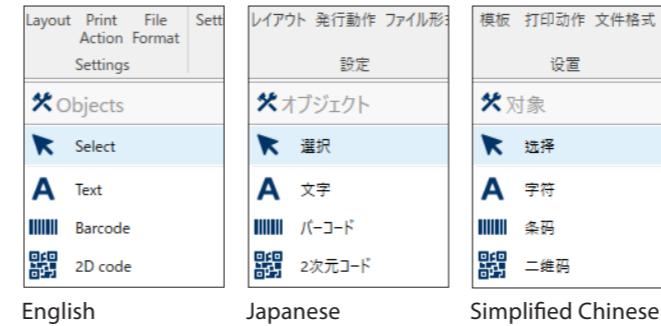
Use the software to change cut interval or settings as necessary.



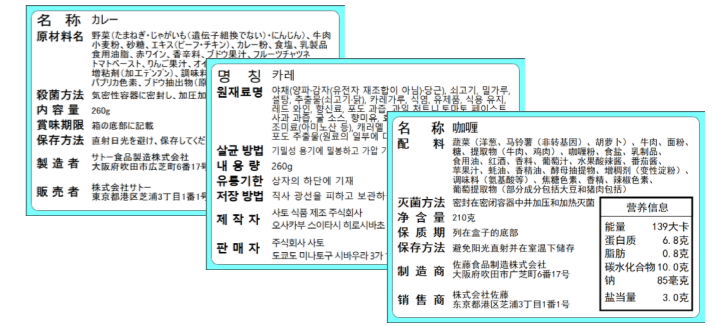
*For SATO printers only.

5. Enjoy multi-national language support

Three display languages



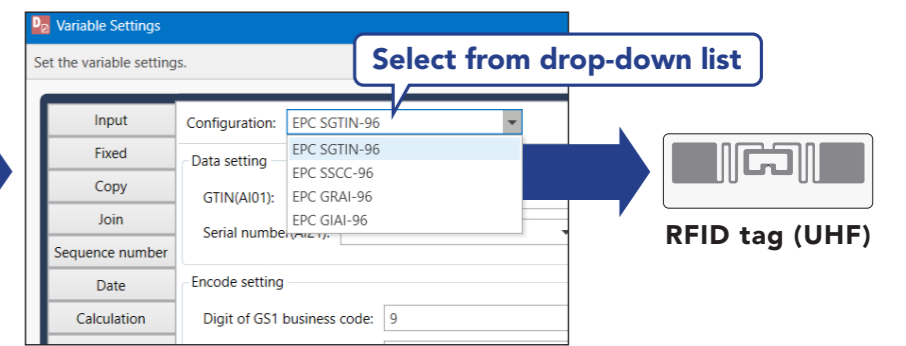
Multiple print languages using Unicode



6. Encode RFID tags easily

EPC encoding types

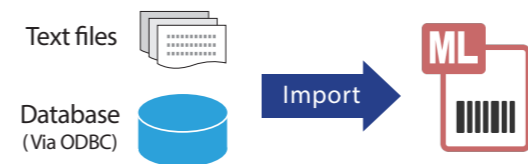
- SGTIN for trade items
- SSCC for shipping containers
- GRAI for assets
- GIAI for assets



7. Streamline printing process

With data import

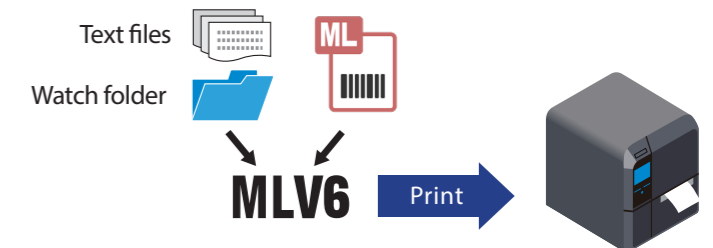
Import data into label templates for printing.



*ODBC (Open Database Connectivity) interface is used for database access.

With watch folder

Watch folders and import data newly added by host applications to automatically trigger printing.



8. Convert old templates to optimize their use



*Printed output may differ after template conversion. Customers are advised to test printing and check print position, barcode readability and other parameters.